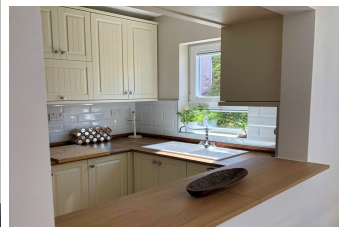
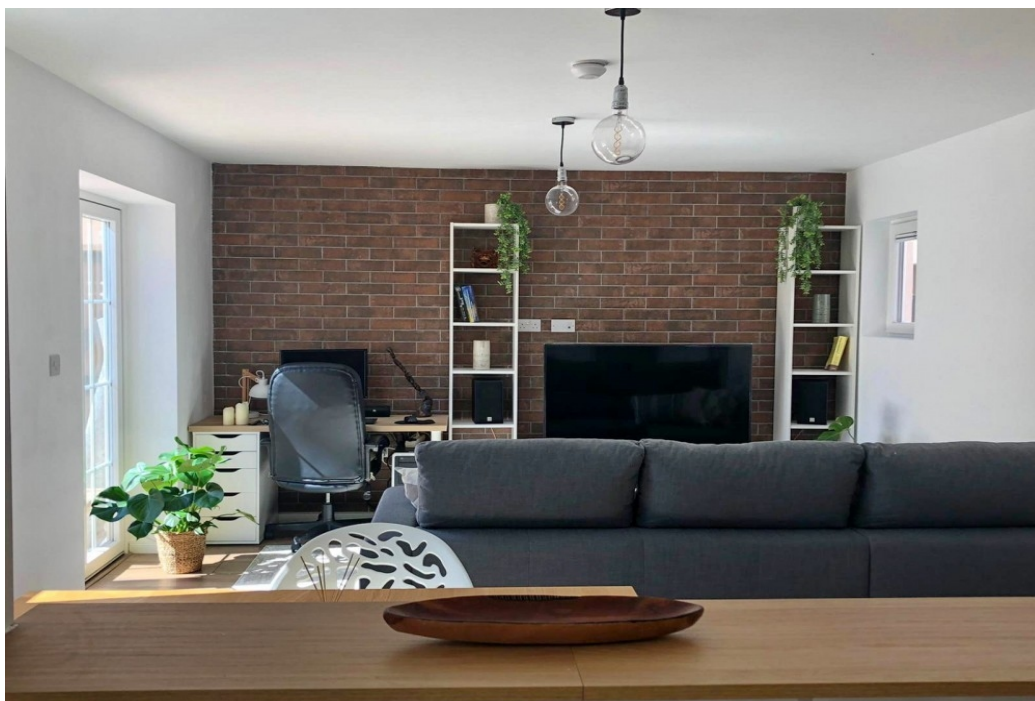




SOLOMON LEVY
ESTATE AGENTS | EST. 1960



South District

EF0001 | APARTMENT

£699,000

BEDS: 3 | BATHS: 2 | AREA: 165m²

PROPERTY FEATURES

Category 2: No

Hepps: No

3 Year Residency: No

PROPERTY DESCRIPTION

Rare Property Alert... Semi-detached 3 bedroom & 2 bathroom house located in Gibraltar's sunny South District in St Christopher's Court, Europa Flats. Immediately adjacent to the popular Europa Point with it's outdoor leisure facilities and historic attractions. The house is set over two floors with private 80m² garden. Transport is made easy with on-street parking immediately outside and the no. 2 bus every quarter of an hour into town. Viewing highly recommended. Please call our offices to arrange a viewing on + 20077789 or send us an email info@slea.gi

📍 28 City Mill Lane, Gibraltar GX11 1AA

☎ (+350) 200 77789 ✉ info@slea.gi

© 2025 Solomon Levy CMS. All Rights Reserved.