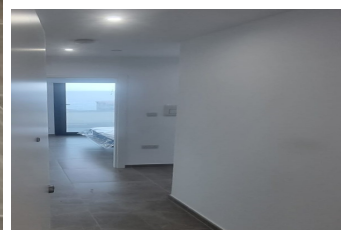




SOLOMON LEVY
ESTATE AGENTS | EST. 1960



E1

£399,000

E10016 | APARTMENT

BEDS: 1 | BATHS: 1 | AREA: 61m²

PROPERTY FEATURES

Category 2: No

Hepps: No

3 Year Residency: No

PROPERTY DESCRIPTION

Lovely presidential suit apartment with terrace situated on the 16th floor in the brand new E1 development, right across from Gibraltar's largest beach and conveniently located close to supermarkets, bus links, the World Trade Centre, and the airport. The high floor allows for impressive sea views. Living alone increases the demand for hotel style services, such as room service (food, cleaning, laundry including dry-cleaning), concierge, gymnasium, pool and wellness spa. E1 provides all of these services for its residents. Please contact our offices to arrange a viewing on +350 20077789 or via email to lettings@slea.gi.

📍 28 City Mill Lane, Gibraltar GX11 1AA

☎ (+350) 200 77789 ✉ info@slea.gi

© 2025 Solomon Levy CMS. All Rights Reserved.