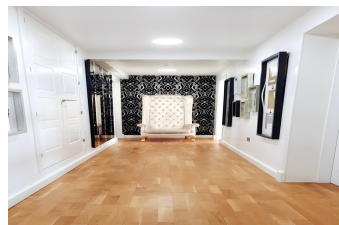




SOLOMON LEVY
ESTATE AGENTS | EST. 1960



Town Centre

ICCO07 | APARTMENT

£3,750 pcm

BEDS: 3 | BATHS: 4 | AREA: 272m²

PROPERTY FEATURES

Category 2: No

Hepps: No

3 Year Residency: No

PROPERTY DESCRIPTION

Introducing this one-of-a-kind palatial three bedroom, 272m² property conveniently located in the heart of town! The apartment boasts a contemporary fitted kitchen with German appliances and a breakfast bar, a very spacious livingroom with bi-fold doors (and automatic shutters) leading out onto a large covered terrace with retractable, conservatory style glass roof and featuring far reaching views towards the bay of Gibraltar, an especially large primary suite complete with wall-to-wall fitted wardrobes and en suite bathroom, two additional bedrooms also with en-suite bathrooms, fourth bathroom & wood flooring and top of the range Daikin A/C throughout. Viewing highly recommended. Includes secure parking onsite. Please contact our offices to arrange a viewing on +350 20077789 or email us at lettings@slea.gi

📍 28 City Mill Lane, Gibraltar GX11 1AA

☎ (+350) 200 77789 ✉ info@slea.gi

© 2025 Solomon Levy CMS. All Rights Reserved.